



中国 · 北京
BEIJING · CHINA

目录

CONTENTS

01 公司介绍

Corporate Profile

02 公司简介
Corporation Introduction

04 组织机构
Organization Structure

06 资质文件
Qualification Certificates

02 核心优势

Core Advantages

08 融资能力
Financing Capability

08 合作银行
Cooperative Banks

09 信息优势
Information Advantage



03 主要工程 Major Projects

- 10 环境建设
Environmental Construction
- 16 农业工程
Agricultural Projects
- 38 电力工程
Electric Power Projects
- 42 工业工程
Industrial Projects
- 54 公共设施
Public Facilities
- 78 交通建设
Transportations

04 远景规划 Development Plan

- 92 发展战略
Development Strategy
- 94 远景展望
Future Vision



中机十院 China Machinery TDI

中机十院国际工程有限公司成立于 1958 年，系原机械工业部第十设计研究院，隶属于中国农业机械化科学研究院（以下简称“中国农机院”）成立于 1956 年，1999 年整体转制为中央直属科技企业，是以自主创新为核心竞争力、以高端农机产品制造为主体，集科、工、贸，产学研为一体的现代高科技制造企业集团。业务涵盖了现代农业装备、畜牧业装备、农产品与食品加工装备、可再生能源装备、军工与特种装备、勘察设计与工程施工以及信息传媒 7 大领域，是国家首批创新型企业和高新技术企业。中机十院总部位于北

China Machinery TDI International Engineering Company Limited was established in 1958 which is restructured from the Tenth Design and Research Institute of Machinery Industry since 2005. Its head office is in Beijing .It has been certificated for QMS, EMS and OHSAS quality system. The company is a comprehensive class-A design and research unit under Central Enterprise Group. The company has strength of technology and has complete disciplines. It is also the supporting institution of China Bearing Industry Association Planning Development Advisory Committee and Human Education Committee of China Machinery Survey and Design Association. Since its establishment ,the Company has completed more than 3000 various projects of planning, engineering

京，是中央大型企业集团所属的国家甲级综合性设计研究单位。中机十院技术力量雄厚，专业配置齐全，还是中国轴承工业协会规划发展咨询工作委员会和中国机械勘察设计协会人力教育委员会等行业组织的依托单位。公司成立以来，共完成国内各类大中型项目的前期规划、工程咨询、可行性研究、工程设计、项目管理与工程总承包等 3000 多项，共获得国家、部、省级优秀设计奖 150 多项，并与众多中央企业、跨国公司和设计事务所建立了长期良好的合作关系。

consulting feasibility studies, engineering design, construction supervision, project management and general contracting of large-scale and middle-scale at home and abroad. After China's reform and opening to the outside world, the Company has won more than 200 prizes of excellent design of national, ministerial or provincial level. It also established long-term good cooperation relations with many international engineering companies and design firms.

Chinese Academy of Agricultural Mechanization Sciences (CAAMS), founded in 1956, was transformed into an S&T enterprise directly under the leadership of central government in 1999. It is a modern high-tech manufacturing enterprise group with the self-innovation as

the drive and high-end products manufacturing as the main business, integrating science, industry and trade. The business scope of CAAMS covers seven areas of modern agricultural machinery, agro-products (food) processing and packaging machinery, renewable energy equipment, special equipment, exploration, engineering design and construction, and media. It is one of the first innovative and hi-tech enterprises in China.

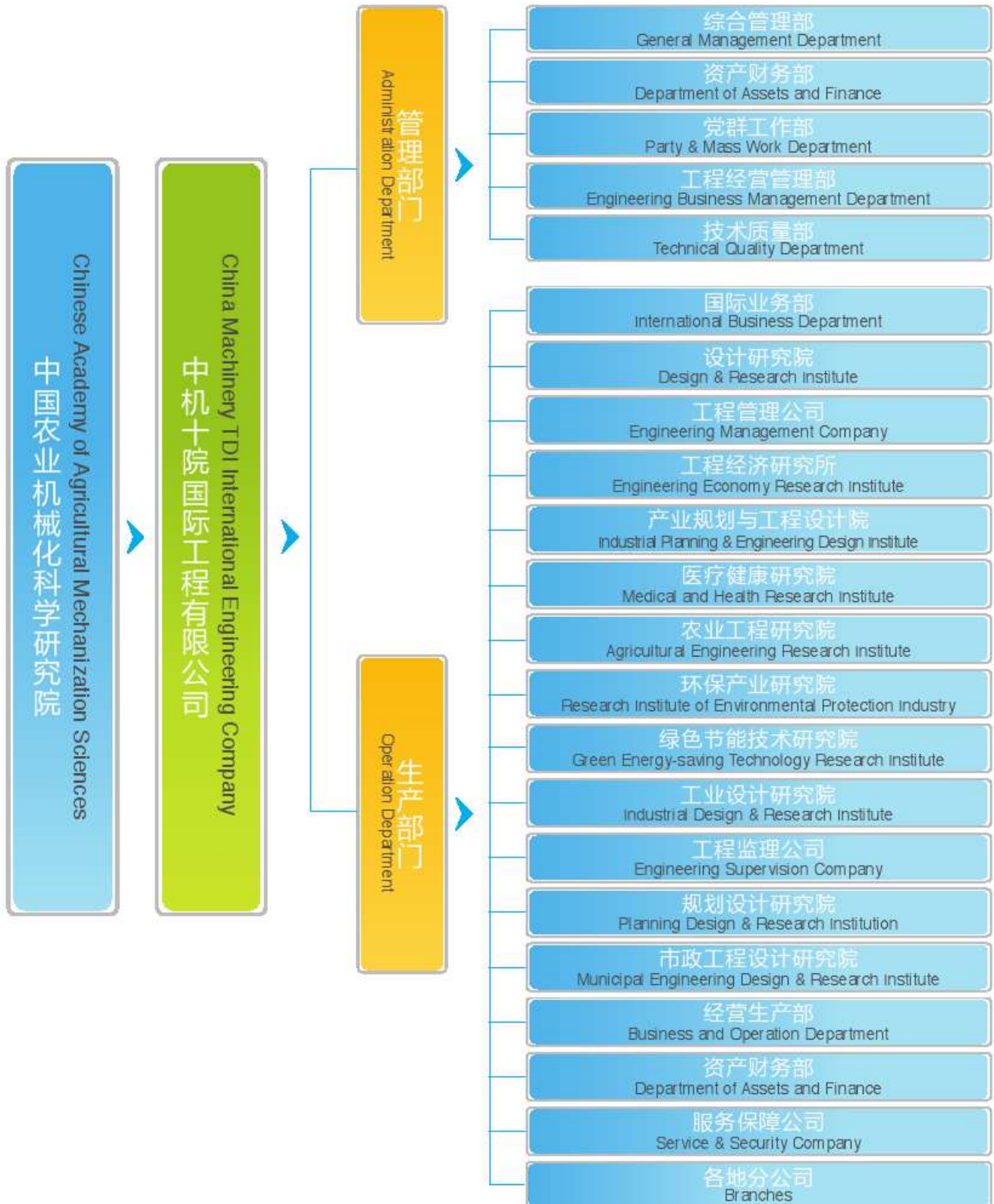




组织机构 Organization Structure

中机十院国际工程有限公司具有完整的公司组织机构，可以更好的开展各项活动，以实现公司的共同目标。

The China Machinery TDI International Engineering Co.,Ltd has a complete organization structure, which can carry out various activities better, to achieve the common goal of the company.





资质文件 Qualification Certificates

中机十院国际工程有限公司具有环境管理体系和质量管理体系证书等各项甲级资质证书。

The China Machinery TDI International Engineering Co.,Ltd has environmental management system and quality management system certificate and other qualification certificates.

<p style="text-align: center;">中华人民共和国</p> <p style="text-align: center;">对外承包工程资格证书</p> <p style="text-align: center;">编号: 110601300003</p> <p>单位名称: 中机十院国际工程有限公司</p> <p>英文名称: China Machinery TDI International Engineering Co., Ltd.</p> <p>经审查, 同意经营本证书登记范围内的对外承包工程业务。</p> <p style="text-align: center;">发证机关 (公章)</p> <p style="text-align: center;">二〇一〇年 月 日</p>	企业法人营业执照注册号 组织机构代码证号	110000012608794	单位代码	110070436811	
	法定代表人	余德胜	单位类型	工程建筑业	
	单位地址	北京市朝阳区德胜门内北沙滩一号			
	注册资本或实收资本	600万元			
	经营范围	1. 承包与其实力、规模、业绩相适应的国外工程项目。 2. 对外承接实施上述境外工程所需的人员。			
	批准文号	商合技[2012]19号			
	发证机关	北京市商务委员会			
	经营检查情况				
		审查合格, 同意发证	2010年 月 日 (公章)		
			年 月 日 (公章)		
		年 月 日 (公章)			
		年 月 日 (公章)			
		年 月 日 (公章)			

- 中华人民共和国对外承包工程资格证书
International Project Contracting Qualification Certificate of the People's Republic of China



● 环境管理体系认证证书
Environmental Management System Certificate



● 职业健康安全管理体系认证证书
Occupational Health and Safety Management Systems Certificate



● 质量管理体系认证证书
Quality Management System Certificate



融资能力 Financing Capability

中机十院国际工程有限公司以良好的经济效益、优良的资信等级和优质的资产价值，获得了多家著名金融机构的信任与信贷支持。

As derived from its operations and activities involving foreign trade, economic and technology cooperation, China Machinery TDI International Engineering Company Limited 's sterling reputation for enabling healthy economic profit and ensuring quality work has gained it access to credit, capital and loan support from numerous notable financial institutions.

合作银行 Cooperative Banks

中国进出口银行	The Export-Import Bank of China
国家开发银行	CHINA DEVELOPMENT BANK
中国银行	Bank of China Limited
招商银行	China Merchants Bank
工商银行	Industrial and Commercial Bank of China
交通银行	BANK OF COMMUNICATIONS
香港汇丰银行	The Hongkong and Shanghai Banking Corporation Limited
日本三井住友	Sumitomo Mitsui Banking Corporation
法国巴黎银行	BNP PARIBAS
澳新银行	Australia and New Zealand Bank
德意志银行	Deutsche Bank
中国出口信用保险公司	CHINA EXPORT & CREDIT INSURANCE CORPORATION

信息优势 Information Advantage

中机十院国际的业务人员遍布世界各地, 拥有广泛的信息获取渠道, 快速的信息反馈和信息处理能力。

China Machinery TDI International Engineering Company Limited's business staffs, who spread all over the world, have extensive channels of information acquisition and the capacity for fast information feedback and processing.



- 中机十院业务人员所在国家
Countries where China Machinery TDI's staffs are located



环境建设 Environmental Construction

中机十院国际工程有限公司具有环境污染防治专项工程设计甲级资质和安全评价甲级资质。近年来,先后承担了偃师市污水处理厂,孟州市供水工程等环境污染防治工程,并承接了一大批垃圾处理厂工程和安全评价及供电、供热等工程项目。

China Machinery TDI International Engineering Company Limited has national class-A certificates of design for special engineering of environmental pollution control and safety assessment. The China Machinery TDI has designed waste water treatment project such as waste water treatment project of Yanshi, water supply project of Mengzhou, and other business like garbage treatment factory, safety assessment, power supply engineering and heat supply engineering.

■ 污水厂 Sewage treatment plant



- 吉利污水处理厂: 洛阳市 吉利区污水处理厂于2007年设计, 2008年建成并运行。设计日处理规模 20,000 吨。

Waste water treatment factory: with capacity of 20,000t /day in Jili District of Luoyang, engineering started in 2007 and construction completed in 2008.

- 汝阳污水处理厂：洛阳市汝阳县城市污水处理厂设计日处理规模 20,000 吨。

Ruyang sewage treatment plant:Waste water treatment factory with capacity of 20,000t/day in Ruyang of Luoyang.



- 安徽萧县生活垃圾填埋场：安徽省萧县生活垃圾填埋场设计日处理规模 476 吨 / 日。填埋场设计总有效库容 3,120,000 立方米。

Xiao county refuse landfill in Anhui:Anhui refuse landfill with capacity of 476t/day and rubbish bury area with capacity of 3,120,000m³in Xiao county, Anhui.





■ 垃圾处理厂 Destructor plant



● 静海 TWR 垃圾处理厂

Impression Drawing of TWR Garbage Disposal Plant Jinghai China

TWR 全资源化垃圾处理技术（TWR—Total Waste Recycling），通过对垃圾进行全封闭机械化高效分选、有机物快速降解、干燥制肥、塑料水洗造粒、污水和废气处理等流程，实现了生活垃圾日产日清。通过以有机废弃生产出有机肥、将废塑料生产出塑料颗粒等再生产品实现了生活垃圾资源的循环利用，并能有效控制了二次污染。

TWR (Total Waste Recycling) technology independently, which transforms biomass in waste into organic fertilizer. TWR technology changes waste into valuable and solves secondary pollution problem effectively. TWR technology produces qualified organic fertilizer through raw material of biomass to guarantee quality of green and organic agricultural products; waste plastic is made into recycled plastic granules, which can be used in varied fields; metals, batteries and glass are sorted and recycled out; waste odor discharges within controlling index of national standard after being processed through deodorizing system; waste water is reused after purification.



● 武清自动上料机器人
Loading Machine



● 武清制塑系统及再生塑料颗粒
Plastic Product Machine and Plastic Pellets



● 武清生化池
Biochemical Basin



■ 供热管道 Heat supply pipeline



- 供热管道设计工程
Engineering design of
heat supply pipeline



- 供热管道设计工程
Engineering design of
heat supply pipeline

■ 供水厂 Heat supply pipeline

- 供热管道设计工程
Engineering design of heat supply pipeline





农业工程 Agricultural Projects

农业工程项目和农业机械成套设备供货项目是中机十院国际工程有限公司的传统优势领域，可承接农业规划、养殖场建设等项目，承建大型屠宰场及各种农产品加工厂。中机十院一直致力于农业机械和成套设备的供货并提供优质的售后服务。

With a traditional superiority in agricultural projects and complete agricultural equipment supply projects, China Machinery TDI International Engineering Company can undertake agricultural planning, agricultural irrigation and farm construction projects and undertake the construction of various agricultural product processing plants. Meanwhile, China Machinery TDI International Engineering Company has been committed to supply of agricultural machinery and complete equipment and providing quality after-sale services.

■ 农业种植 Agricultural planting



● 手扶拖拉机
Walking tractor

- 轮式拖拉机
Wheel type tractor



- 履带式拖拉机
Crawler type tractor





■ 农业播种 Agricultural seeding



● 玉米播种机
Corn seeder



● 花生覆膜播种机
Peanut seeder



● 小麦施肥播种机
Wheat seeder

- 小型马铃薯播种机
Potato seeder



- 油菜旋耕播种机
Rape seeder



■ 农业配套机具 Agricultural machinery

- 耙
Harrow



- 旋耕机
Rotavator



- 犁
Plough

■ 压榨厂 The crushing plant





■ 温室 Greenhouse

- 洛阳四季牡丹博览中心

Luoyang Four Season Peony Exhibition Center





- 该项目与德国 Serbruch hutton 合作规划。总用地面积为 137 公顷，总建筑面积 3021 万平方米，其中植物展区 1.7 万平方米；牡丹文化博览馆 1.35 万平方米；地下技术服务用房 1600 平方米。配备能源设备中心、生产温室、专业冷库、牡丹世界餐厅等助设备。

This project is jointly planned with Sauerbruch hutton from Germany. The total land area is 137 hectares, with a total construction area of about 30,210 thousand m². The plant exhibition area is 17,000 m², the Peony Culture Exhibition Hall is 13,500 m², the underground technical service room is 1,600 m². There are also some other auxiliary buildings such as the energy equipment center, production greenhouse, refrigerator, Peony World Restaurant etc.



● 温室育苗

Greenhouse seedling



● 温室果树

Fruit tree planting in Greenhouse



● 温室花卉

Flowers planting in Greenhouse



● 温室蔬菜

Vegetables planting in Greenhouse



● 温室水产

Aquaculture in Greenhouse

■ 瓶装水加工 Bottled water processing

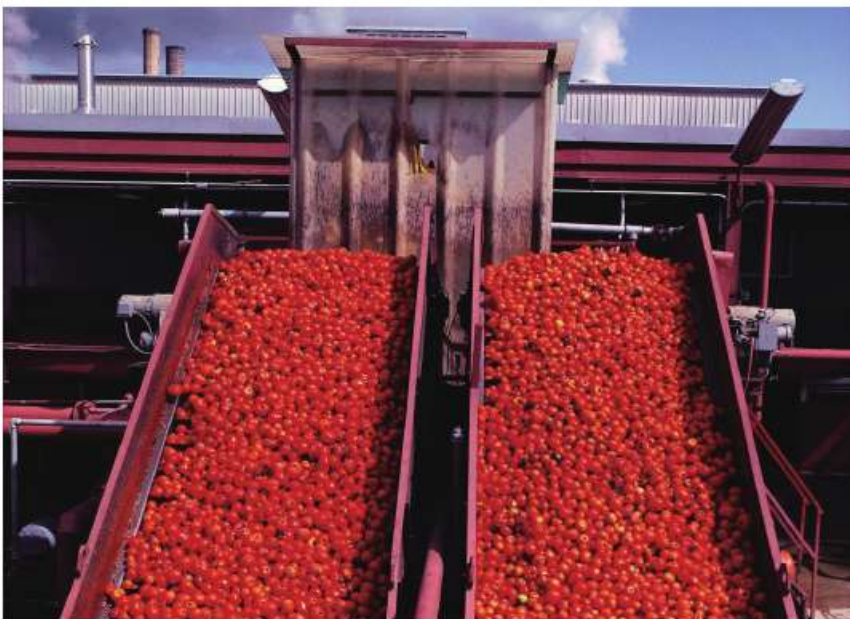




■ 蔬果加工 Vegetable & Fruit processing



● 蔬菜加工
Vegetable processing



● 番茄沙司加工
Tomato sauce processing

- 果汁加工
Fruit juice processing





■ 粮食加工 Food processing



- 现代化糖厂日处理甘蔗 7000 吨的现代化糖

A modern sugar mill with a daily processing capacity of 7,000t sugarcane.



- 粮仓项目该项目内容为承建总建筑面积约 3 万平方米、10 万吨储存能力的粮仓建设。

Grain Storage Shed Project: This project includes the construction of the grain storage sheds with a total building area of about 30,000m² and a total storage capacity of 100,000t.



● 贵州晴隆薏米效果图

Impression drawing of Job's tears plant in Guizhou



● 安徽大平粮油项目

Grain and oil project in Anhui



■ 屠宰 加工 Breeding and processing

业务范围 Business Scope

20-45 头 / 小时肉牛屠宰生产线;

Cattle slaughter 20-45/h

100-300 只 / 小时羊屠宰生产线;

Sheep slaughter 100-300/h

100-400 头 / 小时生猪屠宰生产线;

Pig slaughter 100-400/h

3000-15000 吨 / 年熟食加工生产线。

Cooked food processing 3000-55000t/y

工程业绩 Engineering Achievements

内蒙古林西锦绣大地有限公司 100 头 / 班肉牛屠宰综合加工项目

Cattle slaughter project with a capacity of 100/batch in Innermogholia

山东六润食品有限公司 360 头 / 小时生猪屠宰综合加工项目

Design of the pig slaughter project with a capacity of 360/h in Shandong



● 鸡屠宰

Chicken slaughter



● 牛屠宰

Cattle slaughter



- 北京鸭屠宰制坯加工厂 2000/小时，年产 5000 吨熟食制品建设占地面积：53,836 平方米，加工车间占地面积：13,000 平方米。

Beijing Duck Butchering & Processing 2000ducks/hour, an annual output of 5000 tons processed food. Land occupying area: 53,836 m², land occupying area of the processing workshop: 13,000m².



- 广东温氏三黄鸡加工 12000 只 / 小时三黄鸡屠宰综合加工厂
Guangdong Wen-Shi- Jia-Run Food Co.Ltd Three Yellow Chicken overall processing plant with a capacity of 12000 chickens/hour.



- 赛飞亚集团 2500 只 / 小时肉鸭屠宰加工车间，车间占地面积 14500 平方米。
Sai-Fei-Ya Group Duck butchering & processing workshop with a capacity of 2500 ducks/hour .Land occupying area of the processingworkshop:14500 m²



● 长春物流农机
Changchun logistics park



● 疆农副产品物流园
Xinjiang Agricultural Byproducts Logistics Park



■ 养殖场 Farming



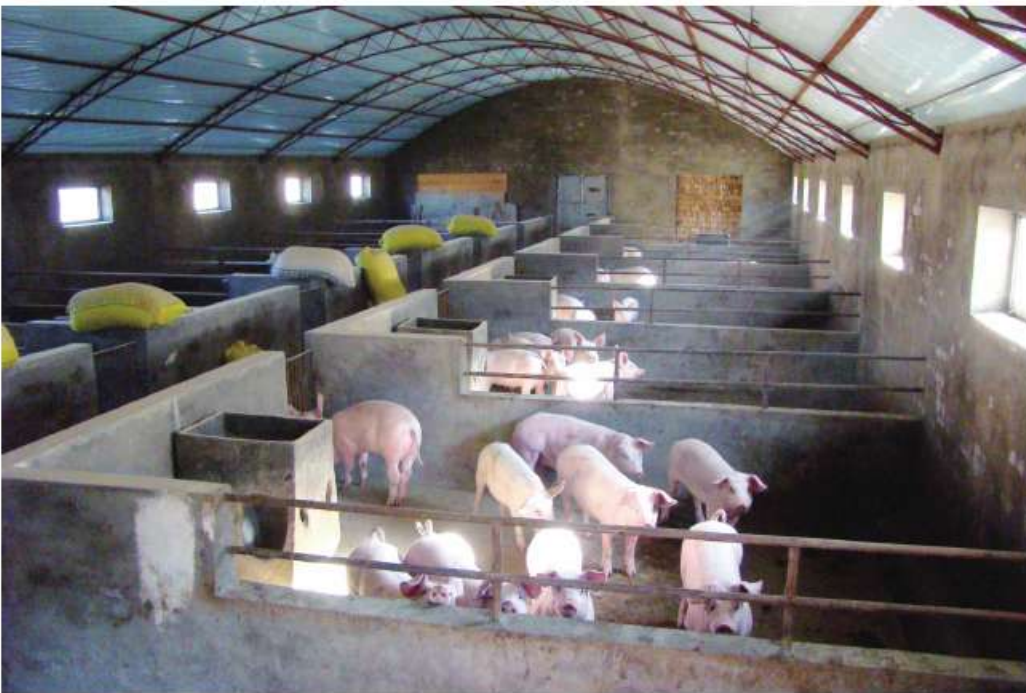
● 牛养殖
Cattle farms



● 羊养殖
Sheep farms



● 鸡养殖
Chicken farms



● 猪养殖
Pig farms



■ 酒精厂 Alcohol plant



- 年产4万吨食用酒精厂，内容为设备供货、工厂设计、调试验收。
The project includes equipment supply, plant design, commissioning and acceptance of an edible alcohol plant with an annual output of 40,000t.

■ 面粉厂 Flour Mill Project

- 日处理原粮 100 吨。
A daily processing capacity
of 100t wheat.





电力工程 Electric Power Projects

中机十院国际工程有限公司多年来一直致力于电力工程，包括变电站、输电线路、风力发电、太阳能发电等。

For years, China Machinery TDI International Engineering Company has been committed to the design of electric power projects, including substations, transmission, wind power generation, and solar power generation.



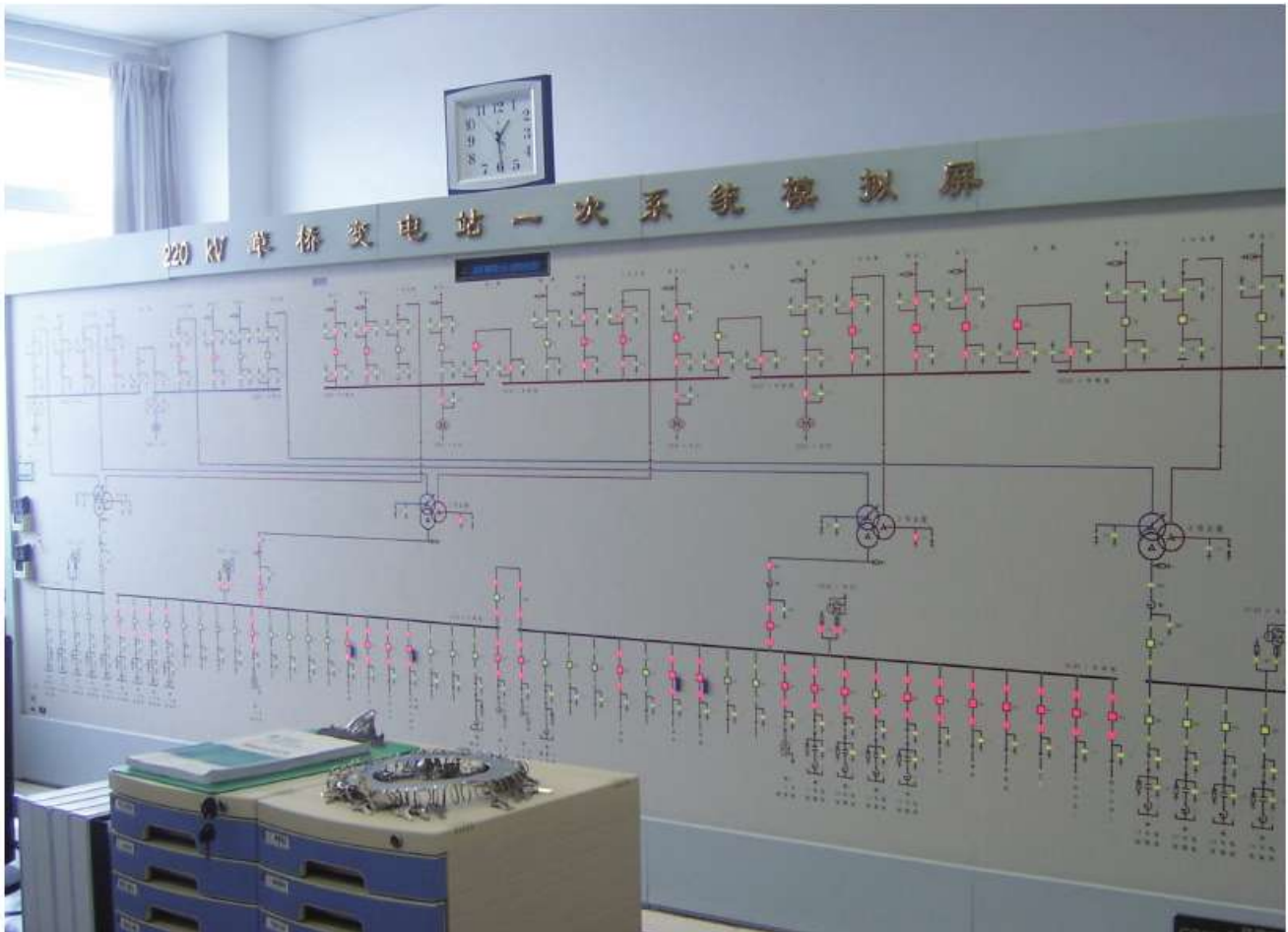
- 变电站 采用 4 台 10Mvar 油浸风冷方式变压器。

Substations adopts four sets 10mvar transformer oil-immersed forced-air cooling way.



- 100 公里长双回路 500KV 输电线路。

100 - Kilometer - long double circuit 500 KV transmission line.



- 变电站后台采用最先进的计算机监控系统，全站采用 IEC61850 通讯规约，实时监测控制断路器、隔离开关、接地刀闸、变压器、保护信号、各种装置状态信号、电气量和非电气量信号。

Substations adopts the most advanced computer monitoring and control system, and uses IEC61850 communication agreement, real-time monitoring and control of circuit breaker, isolating switch, earthing switches, transformers, protection signal, all kinds of device status signals and the electricity parameters and non-electricity parameters.



- 变电站采用4台主变，220kv进出线4回，110kv出线12回，10kv馈线28回。

Substations uses four sets main transformer, 4 incoming and outgoing lines of 220 kv, 12 outgoing lines of 110 kv, 28 feeders of 10kv.



- 500kv 变电站站装设3组750MVA变压器，工期2008~2010年建成。

500kv substation installed 3 groups 750 MVA transformer, period of 2008~2010.



● 风能发电
Wind power generation



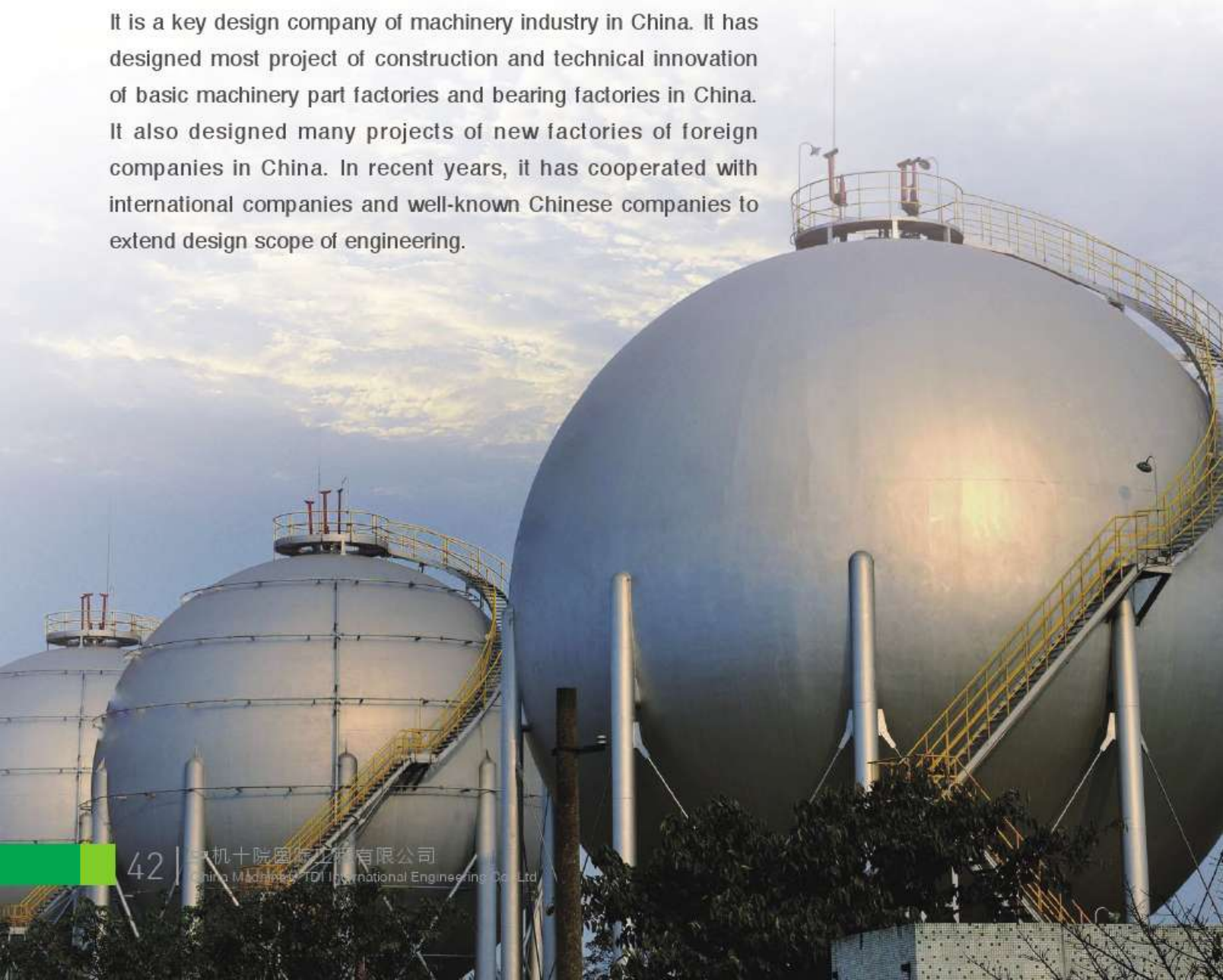
● 太阳能发电
Solar electrical energy generation



工业工程 Industrial Projects

中机十院国际工程有限公司是服务于机械行业的甲级设计企业，是中国机械行业骨干设计单位，承担设计了国内绝大多数机械基础件及轴承行业龙头企业建设项目及技改项目，并承担了许多国外公司在国内建设的工厂设计。近几年，我公司又积极拓展工业工程领域，与一些跨国公司及国内著名企业合作。

China Machinery TDI International Engineering Company Limited is a national class-A design company serving machinery industry. It is a key design company of machinery industry in China. It has designed most project of construction and technical innovation of basic machinery part factories and bearing factories in China. It also designed many projects of new factories of foreign companies in China. In recent years, it has cooperated with international companies and well-known Chinese companies to extend design scope of engineering.





- 日本阿尔派公司太仓项目太仓阿尔派电子有限公司建设项目位于江苏太仓，是一家复杂的高精密电子制造工厂，建造商阿尔派公司是世界著名的电子制造商之一。一期工程联合厂房总建筑面积为 14,000 平方米，该项目获得河南省勘察设计三等奖。

Japanness Alpine Company Taicang Alpine Electronics Company
Located in Taicang city in Jiangsu province the company is a new complicated factory of precise electronic product. Alpine company in Japan is one of the famous electronic manufacturers in the world. Total building area of the first phase of Taicang Alpine Electronics Company is 14,000m². Design of the factory wins third class prize of excellent design of Henan province.



● 广东省珠海玻璃制造厂

● 阿尔及利亚浮法玻璃厂

阿尔及利亚浮法玻璃厂（600吨/天）是目前非洲最大的浮法玻璃生产线，采用中国最先进的洛阳浮法生产工艺。一期工程建筑面积60,000余平方米，地下厂房深10米，地上全部采用钢结构。全部结构采用SAP2000进行电算，并顺利通过阿尔及利亚国家建设审查机构（CTC）的审查。

Floating Glass Factory

Floating Glass Factory in AlgeriaThe factory (600t/d) is the largest floating glass factory in Africa. The most advanced process of Luoyang floating technology in China is introduced into the factory. Building area of the first phase of the factory is over 60,000m². The factory is built up with steel structure. Its underground workshop is 10m deep. The structure is calculated with software SAP2000. Design of the factory is examined and approved by construction authority.



- 马来西亚 CVM 公司厂区
马来西亚 CVM 公司（简称南亚镁业）镁冶炼厂，位于马来西亚霹靂州太平县工业开发区。生产能力年产 30,000 吨镁锭，其中一期年产 15,000 吨镁锭。总建筑面积 69,000 平方米，主要包括：锻烧车间、混磨制球间、精炼车间、还原渣处理系统、办公楼、食堂等。

CVM factory in Malaysia

(Construction management, design and supervision)CVM factory in Malaysia is located in Taiping industrial development area of Malaysia. It has an annual output of 30,000t for magnesia ingot. Its total building area is 69,000m², which including workshop for calcite, mixed grinding and ball-making, reducing, finish smelting, treatment system of reducing materials, office building and canteen.





- 日本东芝（Toshiba）电梯公司

日本东芝电梯（沈阳）有限公司新工厂位于沈阳市浑南开发区，总建筑面积75,000平方米，电梯研究塔平面尺寸15.5米×15.5米，高度128.3米，高宽比达8.28，在中国已建电梯研究塔中排名第一，主体结构被评为东北三省四市观摩金奖第一名。

Japanese Toshiba Elevator Company

Located in Hunnan Development Zone of Shenyang city, the new factory of Toshiba Elevator (Shenyang) Company has building area of 75,000m². The area of elevator research tower of the factory is only 15.5m×15.5m, but the height of the tower is 128.3m. The ratio of height and width of the tower is 8.28, which is number one among elevator research towers in China. Main structure of the factory wins the first place of golden prize in northeast area of China which including workshop for calcite, mixed grinding and ball-making, reducing, finish smelting, treatment system of reducing materials, office building and canteen.



- 安阳钢铁厂办公楼
厂区占地面积 43 万平方米，建
筑面积 3.9 万平方米

**Anyang Iron and Steel Group
Office building**

This project covers an area
of 430,000m².The land for
construction is 39,000m² .



- 安阳钢铁厂 - 会展中心
International Exhibition Center



- 安阳钢铁厂前区总体鸟瞰
Front area of factory



● 哈尔滨轴承制造有限公司

哈尔滨轴承制造有限公司是全国 520 家重点企业，中国轴承行业的三大生产基地之一。工艺设备 1,366 台，年产量 2,458,900 套，厂区总占地面积 351,037.85 平方米，厂 186,799.09 平方米，总投资 1,668,000,000 元，其中建设总投资 1,178,000,000 元。

Harbin Bearing Manufacture Company

The company is one of three big manufacture bases of bearing industry in China. Its total building area is 351,037.85m². Its new building area is 186,799.09 m². Its total investment is 1,668 million RMB yuan, in which 1,178 million RMB yuan is for construction.



- 辽宁省瓦房店轴承厂
占地面积 79 平方公里。由西郊园区、祝华园区、岗店园区、瓦窝园区、太阳园区和九龙园区六大板块组成。



Bearing Industry in Wa Fang-Dian of Liao-Ning Province The total area for the project is 79 square kilometers, including 6 block zones including Western Suburban Zone, Zhuhua Zone, Gangdian Zone, Wawo Zone, Sun Zone and Jiulong Zone .





M

ajor Projects
主要工程



- 日本中央发条株式会社 天津中星汽车零部件有限公司
天津中星汽车零部件有限公司由日本中央发条株式会社和上海汽车悬架件有限公司合资成立，位于天津泰达开发区，总建筑面积 16,000 平方米，主要生产汽车驱动桥总成中的稳定杆和行李箱扭杆，设计年产量 1,662,600 件。该公司在国内同行业中居主导地位。

Japanese Chuo Spring Company

Tianjin Zhongxing Automobile Part Company is a joint venture of Japanese Chuo Spring Company and Shanghai Automobile Suspension Part Company. It is located in TEDA Development Zone of Tianjin city and has building area of 16,000m². It produces stabilizing rod of automobile driving axle and torsion bar of baggage compartment. Annual output is 1,662,600 pieces. The Company enjoys leading position in its product scope in China.





- 化肥厂
主要产品有尿素、液氨、氨水和转化剂

Fertilizer factory
Main products urea, ammonia, ammonia and transforming agent.



- 水泥厂
一期工程日产 2500 吨位

Cement plant
A daily output of 2,500t in the first phase.



● 深圳—新疆农副产品物流园

该项目占地面积为 95473 平方米，其建筑面积为 66668 平方米。

Shenzhen -Xinjiang Agricultural Byproducts Logistics Park.

This project covers an area of 95,473m².The building area is 66,668m².



● 美国宝洁（P&G）公司天津西青开发区项目
American P&G Company Project in Tianjin Xiqing Development Zone



公共设施 Public Facilities

中机十院国际工程有限公司在民用建筑设计领域，经过几十年的精心耕耘，已在市场上树立了良好的信誉口碑。许多国家级、省部级重点工程均由我公司顺利完成，并且部分重点工程获得了国家级、省部级优秀工程设计奖。

China Machinery TDI International Engineering Company has established good reputation in civil architectural design field after near fifty years in the market. It has designed many national and provincial key projects, some of which have won excellent design prizes of national and provincial level.

■ 医院 Hospital



● 河科大二附属院外科楼

Planning of Second Att-ached Hospital to Henan University of Science and Technology



- 河科大二附属院外科楼
地下二层，地上十九层，内设供应室、手术室、ICU病房、妇产科、外科等各种病房，总建筑面积28,300平方米。

Planning of Second Attached Hospital to Henan University of Science and Technology Surgical building of Second Attached Hospital to Henan University of Science and Technology. Building area 28,300m².



- 开封市第一中医院

项目位于开封市老城区。占地面积约 6615 平方米。建筑物包括门诊楼及病房楼各一栋，地下一层、地上五层（局部六层），总建筑面积：31785.49 平方米。

The First Chinese Herbal Medicine Hospital of Kaifeng

This project is located in the old city of Kaifeng. It covers an area of about 6615 m². The structures include an outpatient building and an inpatient building. They are 5-storey buildings with a basement. The total construction area is 31,785.49 m².





● 中俄心血管治疗中心综合楼

Complex building of Luoyang Cure Center Cardiovascular Diseases of Sino-Russian Cooperation.



- 深圳市福田中医院
总建筑面积 88668.06 平方米，其中：地下建筑面积 40940.61 平方米，地上工程（门诊住院楼及医技综合楼）47727.45 平方米。

Chinese Medicine Hospital Reconstruction Project in Shenzhen Futian District
The total construction area of this project is 88,668.06m² and upper ground area of 47,727.45 m².





- 深圳市福田区人民医院
项目总建筑面积 171048.31 平方米，其中：地下建筑面积 52428.96 平方米，地上建筑面积 118619.35 平方米，总床位 1200 张。

Shenzhen People's Hospital in Fulian District

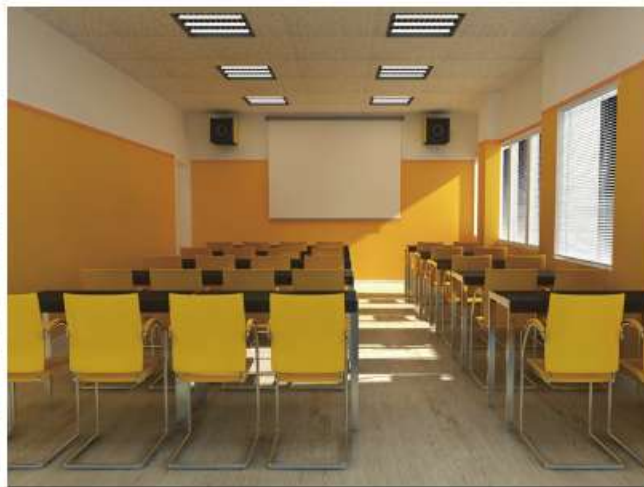
The total construction area of this project is 171,048.31 m², with an underground area of 52,428.96 m². The upper ground area is 118,619.35 m². The hospital has 1200 beds in total.





■ 学校 School





● 安哥拉教育部直属学校校区

占地面积：5168 平米，建筑面积 1523 平米，设有教室、多功能室、教师办公室、图书馆、食堂、操场等。

School of Education Ministry of Angola

The total land area is 5168m²,The total construction area is 1532m²,with classrooms, multi-purpose room, office, library, canteen teacher, playground etc..



- 河南枫叶国际学校

项目包括高中、初中、小学、幼儿园等, 建筑面积 23.66 万平方米。其中, 高中 99570 平方米。主要建筑为教学楼、实验楼、综合楼、图书馆、艺术楼、食堂、报告厅及体育馆等。

Henan Maple Leaf International School

This project consists of senior high school, junior high school, primary school and kindergarten, with a total construction area of 236,600m². Among them, senior high school occupies 99,570m². The main structures include teaching building, laboratory building, complex building, library, art building, dining hall, auditorium and gymnasium, etc.





- 河南枫叶国际学校鸟瞰图
Bird's-eye view of Henan Maple leaf International School



- 河南枫叶学校初中部学生宿舍透视图
Henan maple leaf international school student dormitory



- 河南枫叶小学食堂
Henan maple leaf primary school canteen



● 广东东莞小学
Dongkeng primary school in Dongguan



● 广东东莞市塘厦初级中学
Dongguan Tangxia junior high school



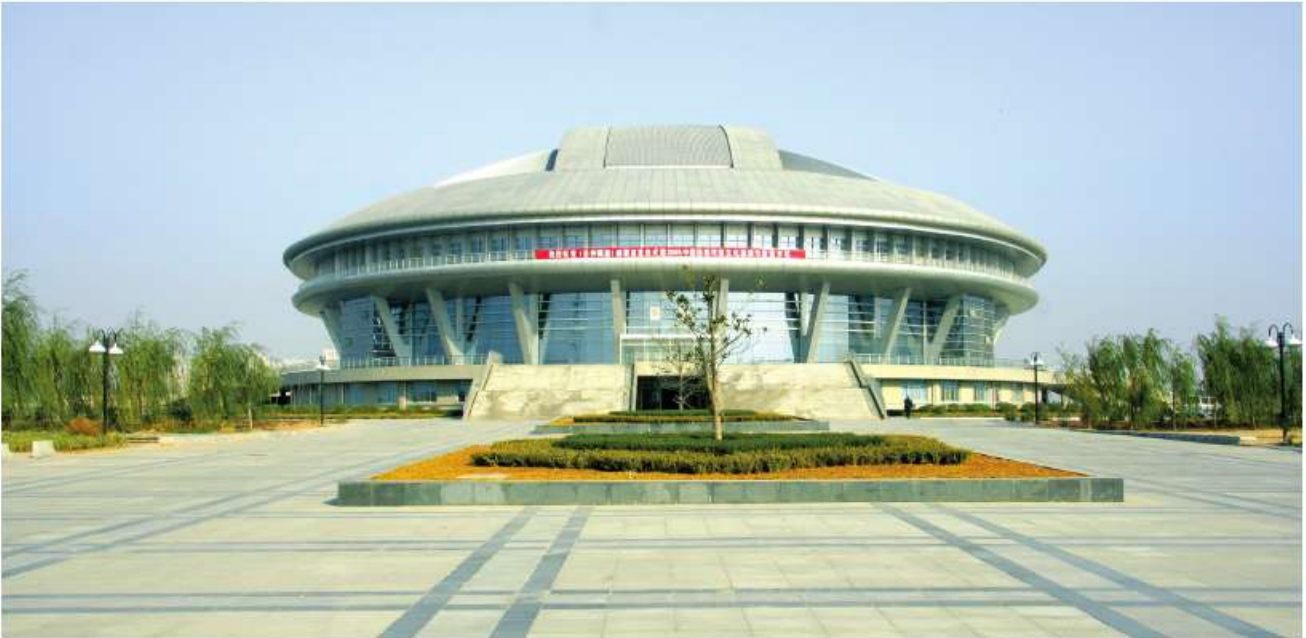
- 洛阳大学
主要建筑物为教学楼、实验楼、综合楼、图书馆、食堂等。
Luoyang University The main structures include teaching building, Laboratory building, complex building, library, and auditorium etc.



■ 体育馆 Gymnasium



● 洛阳铁路分局体育馆
Gymnasium of Luoyang Railway Bureau



● 洛阳市体育馆
Gymnasium of Luoyang

■ 剧院 Theatre



● 剧院
Theatre



■ 办公楼 Office building



- 中国南方航空股份有限公司北京基地
Beijing base of China Southern Airlines Company Limited.



● 办公楼
Office building



● 会议室
Meeting room



● 运行控制大厅
Operation control hall



● 飞行员及乘务员公寓
Staff apartment building

中国南方航空股份有限公司北京基地，内设有运行控制大厅、综合服务楼、飞行员及乘务员公寓、会议室和办公楼大厅、综合办公楼等。

Beijing base of China Southern Airlines Company Limited. In Beijing base of China Southern Airlines Company Limited has Operation control hall, Complex service building, Staff apartment building, Meeting room and lobby of office building and Complex office building etc.



- 中国南方航空综合办公楼

Complex office building

Office building of authorization committee of central government.
(The design, supervision and project administration are undertaken by China Machinery TDI International Engineering Company)



- 中央机构编制委员会办公楼
总建筑面积 22000 平方米 (公司总承担设计、监理及项目管理)

Office building of authorization committee of central government, building area 22000 m². (The design, supervision and project administration are undertaken by China Machinery TDI International Engineering Company)





■ 银行 Bank

- 深圳农商行坪山支行

深圳农商行坪山支行占地面积 1 万平方米。

Shenzhen Rural Commercial Bank a total area is 10,000 m²,
of China Southern Airlines Company Limited



- 中国农业银行洛阳分行
Luoyang Branch of Agricultural Bank of China





■ 住宅 Residential district



- 国务院机关事务管理局部长级居住区
国务院机关事务管理局部长级居住区总建筑面积 79,600 平方米，地下二层，地上十五层，由五栋建筑物构成。

Total building area of residential quarters of ministers of Administration Bureau of the State Council is 79,600m². There are five buildings, which have 15-storeys and two levels of basement.



- 海南清水湾度假区

总用地面积 2,433.22 公顷，可建设用地面积 2,363.85 公顷，区内规划总人口规模控制在 116,620 人以内，其中旅游度假人数 42,000 人。

Qingshuiwan tourist and holiday area in Hainan.

Total area is 2,433.22 hectares. Total population is within 116.620. It can receive 42,000 tourists.



- 栾川伊水湾大酒店

该项目占地面积 33.1 亩，总建筑面积 25,800 平方米，内设有餐饮、娱乐、住宿、健身房等。

Luanchuan Yishuiwan Hotel

The building total area is 25,800m², with Catering, entertainment, accommodation, gymnasium etc.



- 栾川伊水湾大酒店
Luanchuan Yishuiwan Hotel



● 住宅
Accommodation



● 住宅
Accommodation



● 住宅
Accommodation



交通建设 Transportations

中机十院国际工程有限公司多年来一直致力于交通基础设施建设，为项目所在国承建机场、港口、码头、船厂、公路、铁路、桥梁等。

For years, China Machinery TDI International Engineering Company has been committed to the construction of transportations and infrastructure projects, such as airports, sea ports, shipyards, roads, railways and bridges in different countries.

■ 道路 Road

- 洛阳市滨河路

The second phase of the Luoyang Binhe road project





● 洛阳市春城路
Luoyang Chuncheng road



● 高速公路
Motorway



● 洛阳市河洛路
Luoyang Heluo road



● 洛阳市九都西路
Luoyang Jiudu west road new construction



● 洛阳市联盟路
Luoyang Lianmeng road



● 洛阳市龙鳞路改造工程
Luoyang Longlin road reconstruction



● 洛阳新区展览路工程
Luoyang new town Zhanlan road construction works



● 洛阳市开元大道
Luoyang Kaiyuan road



● 洛阳市瀛洲北路
The second phase of Yingzhou north road project



● 洛阳天津南路改造工程
Luoyang Tianjin south road modification works



● 洛阳市秦岭路改造工程
Luoyang Qinling road reconstruction



● 长兴街
Changxing road construction work



■ 火车站 Train station

洛阳火车站项目总建筑面积 21,000 平方米，平面合理解决功能要求和城市用地矛盾，48 米高的钟塔位于城市中轴线上，立面造型独特，“用现代化手法，取古都之精神”，充分体现交通建筑功能分区合理、流线顺畅的特点，站房客运电子设备齐全，显示了站房现代化的管理水平。该项目荣获机电部第二届优秀工程勘察设计一等奖。

Building area of Luoyang railway station is 21,000m². The contradiction of function of railway station and tight land area is settled in the design of the station. The station embodies modern administration of transportation with its electronic equipment. Clock tower of the station is on central line of Luoyang city. The shape of the tower is distinctive. Design of the station wins the first class prize of excellent design of Ministry of Machinery and Electronics Industry.





● 洛阳火车站
The train station of Luoyang



■ 铁路 Railway



● 铁路枢纽
Railway center



● 铁路枢纽
Railway center



● 铁路枢纽
Railway center



● 铁路枢纽
Railway center



● 铁路枢纽
Railway center



● 铁路枢纽
Railway center



■ 地铁 Subway



● 上海地铁
Shang Hai subway



● 北京地铁浦黄榆站
Bei Jing subway



■ 港口 Port



● 船坞工程
Dock project



● 船闸工程
Lock project



● 近海港区
Offshore port

■ 码头 Pier



● 内河港口
Inland river port



● 集装箱码头
Container terminal



● 原油码头
Crude terminal



● 矿石码头
Ore terminal



■ 机场 Airport

- 广州白云机场
Guangzhou Baiyun Airport



- 北京首都国际机场
Beijing Capital International Airport



- 北京首都国际机场

占地面积: 4532 亩 T3 航站楼: 总建筑面积 98.6 万平方米

Beijing Capital International Airport

The total land area is 4532 hectares.T3 airport terminal:The total construction area is 98,6000m²



- 机场跑道 长度: 3799 米; 宽度: 60 米。

Airstrip Length: 3799m; width:60m.





发展战略 Development Strategy

中机十院国际工程有限公司对于未来有着明确的发展目标，为实现企业快速、健康、持续发展制定了一系列的战略规划。

The China Machinery TDI International Engineering Co.,Ltd, based on its clear development goal, has made a series of strategic planning to achieve a fast, healthy and sustainable development.

以增长型战略为主，适度的相关多元化战略为辅。

根据对设计市场，行业背景和本公司现状分析，选择增长型战略为主，强化设计业务，做大总承包业务，以适度的相关多元化战略为辅，培育增长点。

Take the main growth oriented strategy, supplemented by moderate related diversification strategy. According to the analyses of design market, industry background and company status, take the main growth oriented strategy, strengthen the design and general contracting business, with moderate related diversification strategy as a supplement to foster growth.





市场渗透和市场开发相结合，经营由“机会型”向“目标型”转变。

通过更大的营销努力，谋求提高现有产品或服务在现有市场上份额的战略。通过公司的品牌优势，良好的企业商誉，进一步提高市场信息扑捉能力和市场公关能力，把服务当做培育，把服务当做跟踪，把服务转化为市场，把市场转化为目标。以突出各方面的优势，建立各种类型的营销渠道，扩大营销效果。

Market penetration and market development are combined; the management is changed to "target type" by "opportunity type".

Through greater marketing efforts, seek the strategy of improving the existing market share of products or services. Through the company's brand advantage and good corporate reputation, further improve the market information capturing ability and market public relations ability, take the service as cultivation and tracking, convert service into a market, convert market into a target. With highlighting the advantages, build up various types of marketing channels to extend marketing effect.



远景展望 Future Vision

中机十院国际工程有限公司在未来，会从业务、市场、员工等多个方面来展望，并一步步实现所定的目标。

The China Machinery TDI International Engineering Co.,Ltd, is looking forward to the future in business, market, and employment, and is to achieve its development goal step by step.



- 创新业务发展模式，使境外资源投资项目成为公司重要的收入来源。

To continue innovations in business development modes and make foreign resource investment projects the new important source of the company's business and revenue.

- 形成重点海外市场，占据领先地位；

To form a good number of key overseas markets and to obtain a leading role in these markets;

- 以精良的工程，优质的服务，回报用户，造福社会，成就员工；

Benefiting customers, society and staff by excellent engineering and quality service;





地址：北京市朝阳区德胜门外北沙滩1号
电话：010-64882362 传真：010-64877362 邮编：100083
Add: Beishaan, Deshengmen Wai, Beijing
Tel: +86 64882362 Fax: +86 64877362 Postal code:100083

